

TRAUMATIC BRAIN INJURY (GCS < 13)

EMERGENCY DEPARTMENT

CLINICAL PRACTICE GUIDELINE

ORIGINAL PUBLICATION 5/2/2016

UPDATED 5/2019

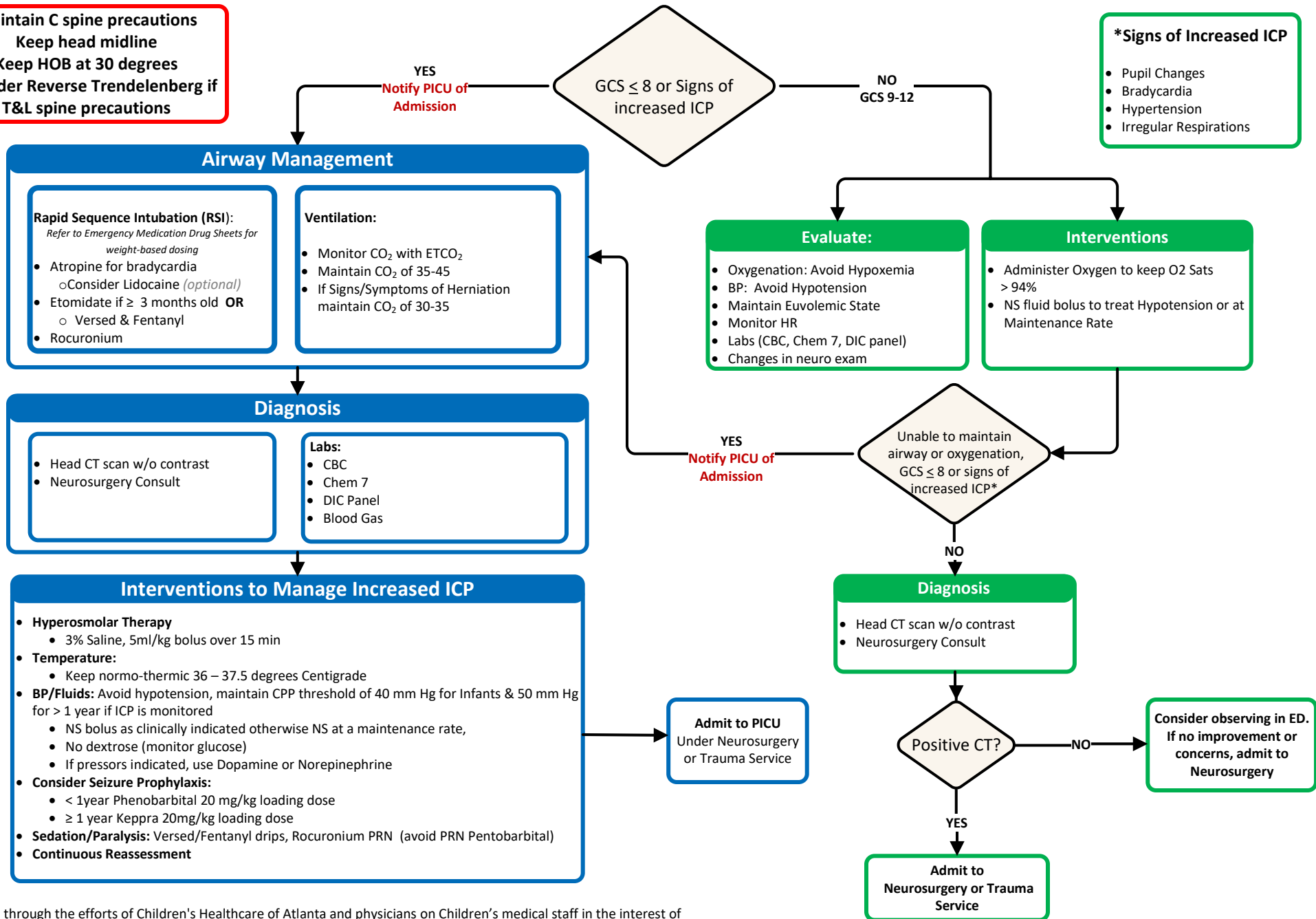
REVIEWED 2/2024



Maintain C spine precautions
 Keep head midline
 Keep HOB at 30 degrees
 Consider Reverse Trendelenberg if
 T&L spine precautions

***Signs of Increased ICP**

- Pupil Changes
- Bradycardia
- Hypertension
- Irregular Respirations



Developed through the efforts of Children's Healthcare of Atlanta and physicians on Children's medical staff in the interest of advancing pediatric healthcare. This is a general guideline and does not represent a professional care standard governing providers' obligation to patients. Ultimately the patient's physician must determine the most appropriate care.

© 2024 Children's Healthcare of Atlanta, Inc.